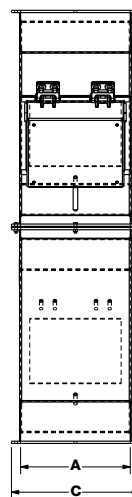
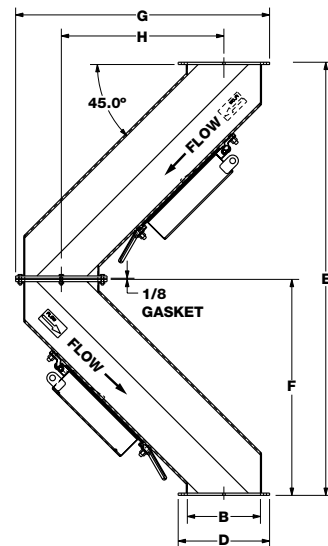




# Hump Magnets

Designed for installation in enclosed flow lines on processing equipment. The angled shape directs the product flow into the magnetic field, helps prevent build-up and bridging, and also breaks up clumps of product for increased protection against entrapped ferrous debris.

Standard Hump Magnet



## Standard and Half-Hump Magnets

Dimensions in inches.

Plate Magnet Model	Opening Width A	Opening Depth B	Flange Width C	Flange Depth D	Full-Hump Standard Models E	Half-Hump Standard Models F	Depth G	Center-to-Center H	
*HMT-306	300	6	7	8	9	42 7/32	21 1/16	24 5/8	15 5/8
*HMT-308	300	8	7	10	9	42 7/32	21 1/16	24 5/8	15 5/8
*HMT-310	300	10	7	12	9	42 7/32	21 1/16	24 5/8	15 5/8
*HMT-312	300	12	7	14	9	42 7/32	21 1/16	24 5/8	15 5/8
*HMT-318	300	18	7	20	9	42 7/32	21 1/16	24 5/8	15 5/8
*HMT-424	450	24	8	26	10	47 13/32	23 5/8	27 25/32	17 25/32
*HMT-430	450	30	8	32	10	47 13/32	23 5/8	27 25/32	17 25/32
*HMT-436	450	36	8	38	10	47 13/32	23 5/8	27 25/32	17 25/32
*HMT-442	450	42	8	44	10	47 13/32	23 5/8	27 25/32	17 25/32
*HMT-648	650	48	10	50	12	56 1/32	27 15/16	33 9/32	21 9/32
<hr/>									
HNT-306	350	6	7	8	9	38 11/16	19 9/32	22 27/32	13 27/32
HNT-308	350	8	7	10	9	38 11/16	19 9/32	22 27/32	13 27/32
HNT-310	350	10	7	12	9	38 11/16	19 9/32	22 27/32	13 27/32
HNT-312	350	12	7	14	9	38 11/16	19 9/32	22 27/32	13 27/32
HNT-318	350	18	7	20	9	38 11/16	19 9/32	22 27/32	13 27/32
HNT-524	500	24	8	26	10	47 13/32	47 13/32	27 25/32	17 25/32
HNT-530	500	30	8	32	10	47 13/32	47 13/32	27 25/32	17 25/32
HNT-536	500	36	8	38	10	47 13/32	47 13/32	27 25/32	17 25/32
HNT-542	500	42	8	44	10	47 13/32	47 13/32	27 25/32	17 25/32
HNT-648	650	48	10	50	12	56 1/32	56 1/32	33 9/32	21 9/32

Specifications are subject to change without notice.

\* When specifying stainless steel with ceramic loads change designation from HMT to HST

## Pneumatic Hump and Half-Hump Magnets

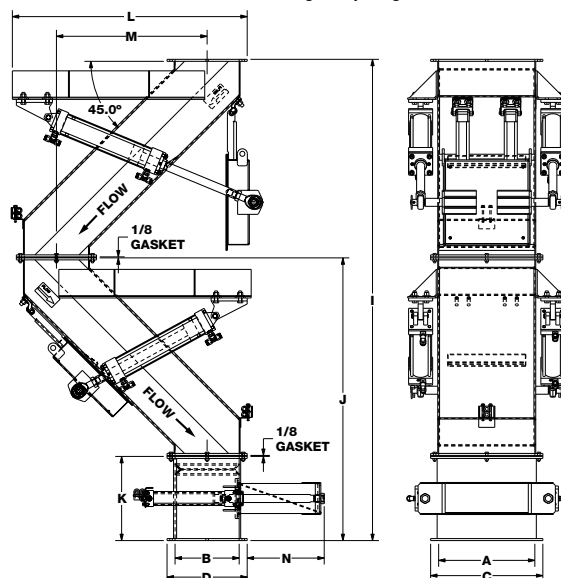
Dimensions in inches.

Plate Magnet Model	Full Hump Height I	Half Hump Height J	Height Tramp K	Depth L	Center-to-Center M	Dump Chute N	
*HMT-306-PSC	300	53 9/16	32 1/32	10 1/2	25 19/32	15 13/32	8 5/8
*HMT-308-PSC	300	53 9/16	32 1/32	10 1/2	25 19/32	15 13/32	8 5/8
*HMT-310-PSC	300	53 9/16	32 1/32	10 1/2	25 19/32	15 13/32	8 5/8
*HMT-312-PSC	300	53 9/16	32 1/32	10 1/2	25 19/32	15 13/32	8 5/8
*HMT-318-PSC	300	53 9/16	32 1/32	10 1/2	25 19/32	15 13/32	8 5/8
*HMT-424-PSC	450	60 1/16	35 9/32	10 1/2	29 5/16	18 13/16	9 5/8
*HMT-430-PSC	450	60 1/16	35 9/32	10 1/2	29 5/16	18 13/16	9 5/8
*HMT-436-PSC	450	60 1/16	35 9/32	10 1/2	29 5/16	18 13/16	9 5/8
*HMT-442-PSC	450	60 1/16	35 9/32	10 1/2	29 5/16	18 13/16	9 5/8
*HMT-648-PSC	650	75 27/32	43 3/16	10 1/2	37	25 7/8	11 5/8
<hr/>							
HNT-306-PSC	350	51 7/16	30 31/32	10 1/2	25 29/32	14 29/32	8 5/8
HNT-308-PSC	350	51 7/16	30 31/32	10 1/2	25 29/32	14 29/32	8 5/8
HNT-310-PSC	350	51 7/16	30 31/32	10 1/2	25 29/32	14 29/32	8 5/8
HNT-312-PSC	350	51 7/16	30 31/32	10 1/2	25 29/32	14 29/32	8 5/8
HNT-318-PSC	350	51 7/16	30 31/32	10 1/2	25 29/32	14 29/32	8 5/8
HNT-524-PSC	500	58 5/8	34 9/16	10 1/2	29 27/32	18 3/32	9 5/8
HNT-530-PSC	500	58 5/8	34 9/16	10 1/2	29 27/32	18 3/32	9 5/8
HNT-536-PSC	500	58 5/8	34 9/16	10 1/2	29 27/32	18 3/32	9 5/8
HNT-542-PSC	500	58 5/8	34 9/16	10 1/2	29 27/32	18 3/32	9 5/8
HNT-648-PSC	650	68 25/32	39 5/8	10 1/2	35 27/32	22 11/32	11 5/8

Specifications are subject to change without notice.

\* When specifying stainless steel with ceramic loads change designation from HMT to HST

Pneumatic Self-Cleaning Hump Magnet



Use dimensions A-H from the top chart